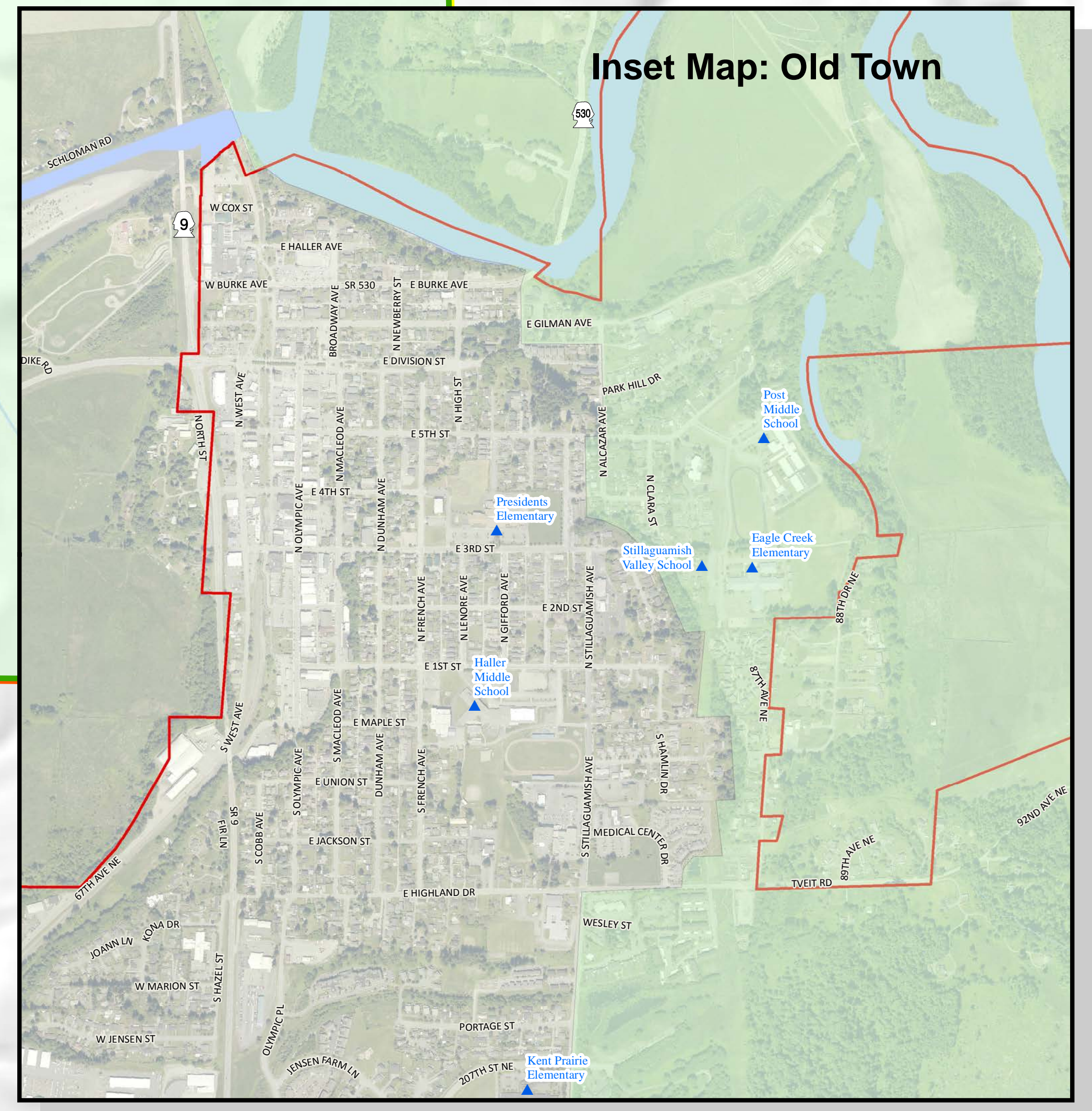
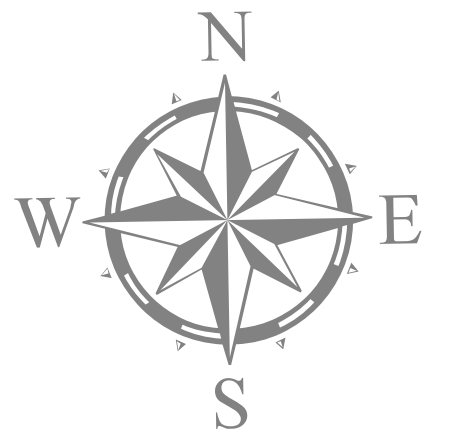


Inset Map: Old Town



Maps and GIS data are distributed "AS-IS" without warranties of any kind, either express or implied, including but not limited to warranties of suitability for a particular purpose or use. Map data are compiled from a variety of sources which may contain errors and users who rely upon the information do so at their own risk. Users agree to indemnify, defend, and hold harmless the City of Arlington for any and all liability of any nature arising out of or resulting from the lack of accuracy or correctness of the data, or the use of the data presented in the maps.



Legend

- ▲ Arlington schools
- + Arlington City Limits
- Arlington School District
- Darrington School Dist.
- Granite Falls School Dist.
- Lakewood School Dist.
- Marysville School Dist.
- Stanwood School Dist.
- Freeway
- State Route
- Major roads
- Local roads

Waterbodies and school district boundaries provided by Snohomish County. GIS data via FTP, downloaded February 2015

Hillshade DEM from Puget Sound Lidar Consortium via online, downloaded 2007 with merge and hillshade applied.

City of Arlington
Eagle Creek Elementary School

Scale: Miles

Date: 3/23/2015

File: EagleCreekES_24x36_15

Cartographer: kdh

